

DATA SHEET



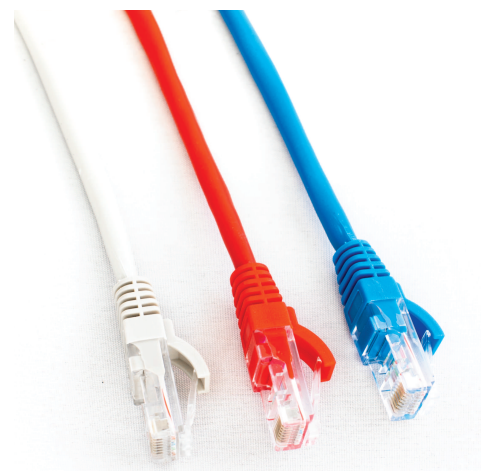
WBX Cat5e Patch Leads

- Available in 0.5m, 1m and 2m (packs of 5)
- Available in 3m or 5m individually
- Available in all sizes in GREY, RED or BLUE



Features

- 8p8c - The 8 position 8 contact connector is a modular connector commonly used to terminate twisted pair and multi-conductor Cat5e cable.
- 26 AWG
- Moulded, snagless boot
- Gold plated connectors
- PVC cable jacket
- EIA/TIA -568B wiring colour code
- 350 Mhz
- Warranty : Limited Lifetime



Product Codes

Length	0.5m (5 PK)	1m (5 PK)	2m (5 PK)	3m (1 PK)	5m (1 PK)
Weight kg	0.05	0.14	0.22	0.065	0.11
Grey	WBXC5EGY0.5MP5	WBXC5EGY1MP5	WBXC5EGY2MP5	WBXC5EGY3MP1	WBXC5EGY5MP1
Red	WBXC5ERD0.5MP5	WBXC5ERD1MP5	WBXC5ERD2MP5	WBXC5ERD3MP1	WBXC5ERD5MP1
Blue	WBXC5EBL0.5MP5	WBXC5EBL1MP5	WBXC5EBL2MP5	WBXC5EBL3MP1	WBXC5EBL5MP1



FOR MORE INFORMATION,
CONTACT YOUR ADI SALES PERSON.

www.wboxtech.eu